



# USER MANUAL

## USER MANUAL

### ATTENTION!

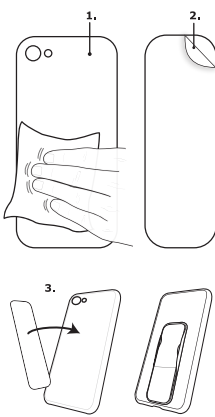
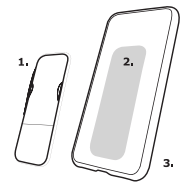
SPECIAL TREATMENT  
FOR MOBILE PHONE WITH  
GLASS BACKPLATE:

IF YOU HAVE DEVICE WITH A  
GLASS BACK AND DO NOT USE  
A CASE, USE THE SUPPLIED  
FILM AS INDICATED BELOW:

**PAY ATTENTION!**  
STICK THE FILM ONTO YOUR  
DEVICE BEFORE ATTACHING  
YOUR GRIP. THIS WILL ENSURE  
THAT THE GRIP WILL STAY IN  
PLACE.

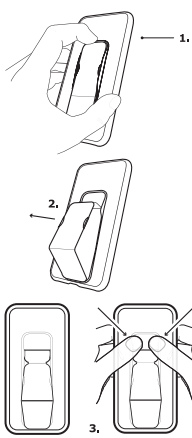
THIS PROCEDURE IS NOT  
NECESSARY FOR OTHER  
DEVICES OR WITH THE USE OF  
A CASE. KEEP IN MIND THAT  
THIS FILM CAN ONLY BE  
USED ONCE.

- 1. THE GRIP
- 2. FILM
- 3. DEVICE



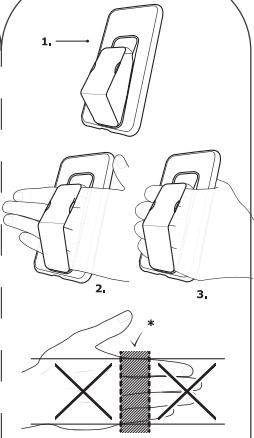
### APPLYING THE GRIP

1. CLEAN THE BACK OF  
YOUR PHONE OR CASE.
2. REMOVE THE PROTECTIVE  
LAYER FROM THE ADHESIVE  
TAPE.
3. PUT THE GRIP AT THE  
BOTTOM OF YOUR PHONE  
OR CASE AND APPLY  
PRESURE FOR 1 MINUTE.



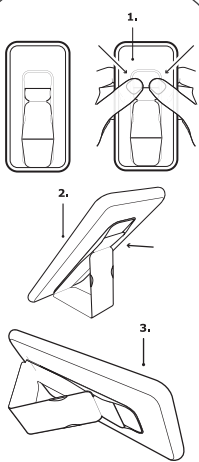
### GRIP USAGE

1. OPEN THE BAND BY  
PULLING THE TOP OF THE  
'CLOSED' STRAP AS SHOWN.
2. YOUR STRAP IS NOW IN  
AN 'OPEN' POSITION.
3. FOLD THE STRAP LIKE  
SHOWN AND **PRESS BOTH  
SIDES** UNTIL THEY SNAP.  
YOUR STRAP IS NOW IN  
'STAND' FUNCTION.



### GRIP FUNCTION

1. START WITH THE GRIP  
IN A 'OPEN' POSITION.
2. SLIDE IN YOUR HAND PALM  
FACING YOUR PHONE. THE  
GRIP SHOULD BE PLACED  
WITHIN THE MARKED AREA.\*
3. HOLD NATURALLY FOR A  
SECURE HOLD DURNING  
YOUR ACTIVITY.



### STAND FUNCTION

1. START WITH THE GRIP  
IN 'STAND' FUNCTION.
2. THE GRIP WILL NOW  
FORM A STEADY VERTICAL  
'PORTRAIT' STAND FUNCTION.
3. ROTATE YOUR PHONE FOR  
A STEADY HORIZONTAL  
'LANDSCAPE' STAND  
FUNCTION.

### APPLICATION OF THE GRIP:

APPLY YOUR GRIP AT  
ROOM TEMPERATURE.

DECIDE WHERE YOU WOULD  
LIKE TO PLACE YOUR GRIP  
BEFORE APPLYING, AS YOU  
CAN ONLY MOUNT IT  
A COUPLE OF TIMES.

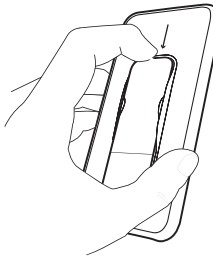
IF YOU ARE USING A MOBILE  
DEVICE WITH GLASS  
BACKPLATE

PLEASE USE THE ADDITIONAL  
FILM BEFORE PLACING THE  
GRIP ( SEE PAGE 1 )

CAREFULLY READ THE  
REVERSE SIDE OF THIS  
MANUAL ON HOW TO  
CORRECTLY APPLY THE  
GRIP TO YOUR PHONE  
OR PHONE CASE.

### REMOVING THE GRIP:

TO REMOVE THE GRIP FROM  
ANY SURFACE CAREFULLY  
PUT YOUR FINGERNAIL  
UNDER THE BACK OF THE  
PLASTIC BACKPLATE AND  
CAREFULLY LIFT IT FROM THE  
ATTACHED SURFACE.



### ADIDAS IS NOT RESPONSIBLE FOR:

\*ANY DAMAGE TO ANY  
SURFACE CAUSED BY THE  
USE OR APPLICATION OF THE  
GRIP.

\*ANY DISCOLORATION  
RESULTING FROM THE  
APPLICATION OR REMOVAL OF  
YOUR GRIP.

\*ANY DAMAGE TO ANY DEVICE  
AND DEVICE PROTECTION  
RESULTING FROM THE  
INCORRECT USE OF THE GRIP.  
CAREFULLY READ THE  
MANUAL ON THE REVERSE  
SIDE TO SEE HOW THE GRIP  
CAN BE USED CORRECTLY.

\* ANY DAMAGE TO A  
MOBILE DEVICE WITH A  
GLASS BACK AS RESULT OF  
NOT USING THE ADDITIONAL  
ADHESIVE TAPE.