

UNIVERSAL RING MANUAL



ATTENTION!

Special treatment for mobile phones with glass backplates or cases with anti-fingerprint coating:

If you have a device with a glass back or a case with anti-fingerprint coating, use the supplied film as indicated below:

Pay attention!

Stick the film onto your device before attaching your ring. This will ensure that the ring will stay in place.

This procedure is not necessary for other devices or with the use of a case. Keep in mind that this film can only be used once.

1. The ring
2. Film
3. Device



1

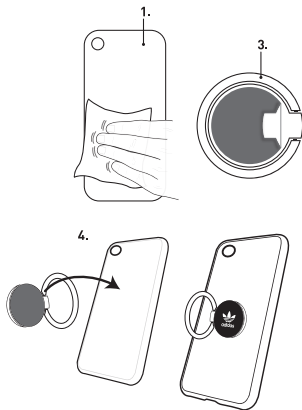
APPLICATION OF THE RING

Apply your ring at room temperature.

After you have read the manual, decide where you would like to place your ring.

1. Clean the back of your phone or case.
2. If you are using a mobile device with a glass backplate or case with anti-fingerprint coating, please use the additional film supplied before placing the ring (see page 1).
3. Remove the protective layer from the adhesive tape.
4. Place the ring in the center of your phone or case and apply pressure for 1 minute.

After application of the ring, test if the adhesive sticks well to the attached surface.



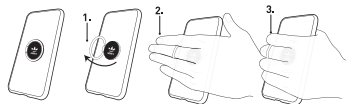
2

THE USE OF THE RING

The ring is 360° rotatable, this gives you more comfort while holding your device.



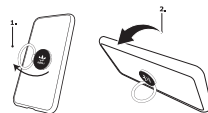
GRIP FUNCTION



1. Open the ring to a 90° angle, you can do this by pulling the ring away from your device or case.
2. Slide one of your fingers through the ring.
3. Hold your phone naturally for a secure hold.

TIP: If you have a device with fingerprint scanner placed above the ring on the back of your phone, sliding your middle finger through the ring will keep your index finger free to press the fingerprint scanner at any moment!

STAND FUNCTION

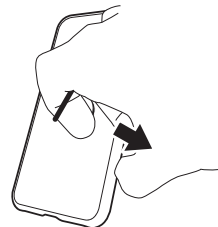


1. Open the ring to a 90° angle, you can do this by pulling the ring away from your device or case.
2. Turn your device sideways and set it on a flat surface.

3

REMOVE OF THE RING

To remove the ring from any surface, put your finger through the ring and carefully pull sideways.



THIS PRODUCT IS NOT RESPONSIBLE FOR:

*Any damage to any surface caused by the use or application of the ring.

*Any discoloration resulting from the application or removal of the ring.

* Any damage to any device and device protection resulting from the incorrect use and application of the ring. Carefully read the manual to see how the ring can be used correctly.

* Any damage to a mobile device with a glass back as result of not using the additional adhesive tape.

* Any malfunction or damage caused by using a wireless charger while the ring is attached to your device.

4